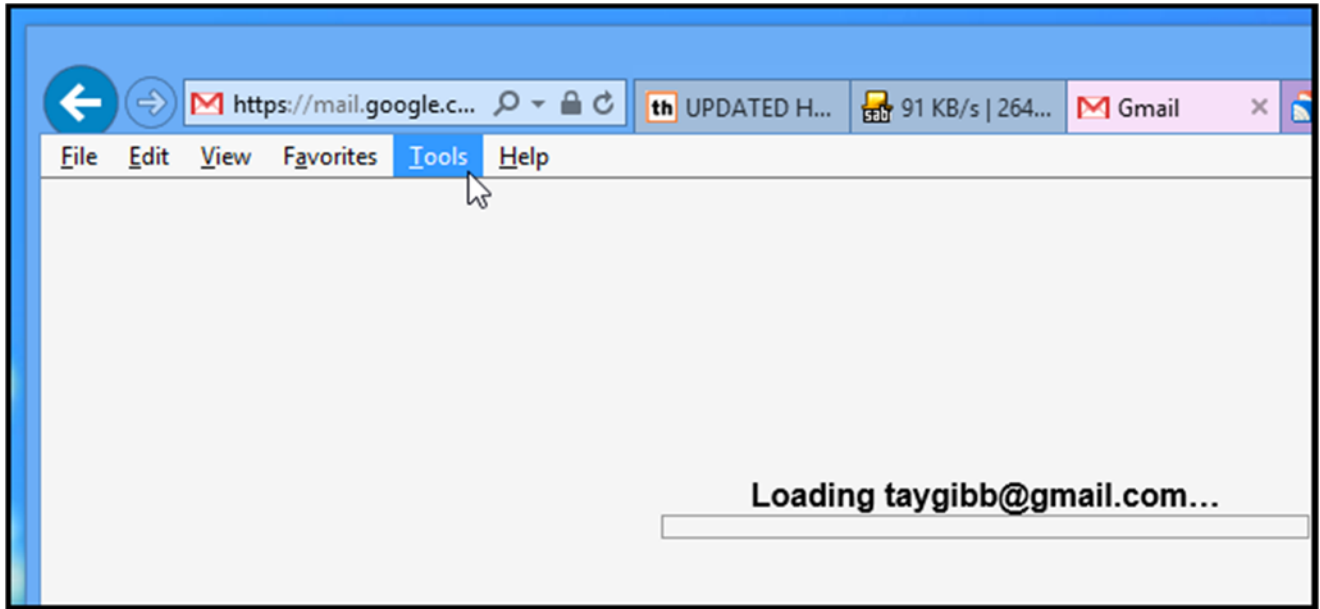
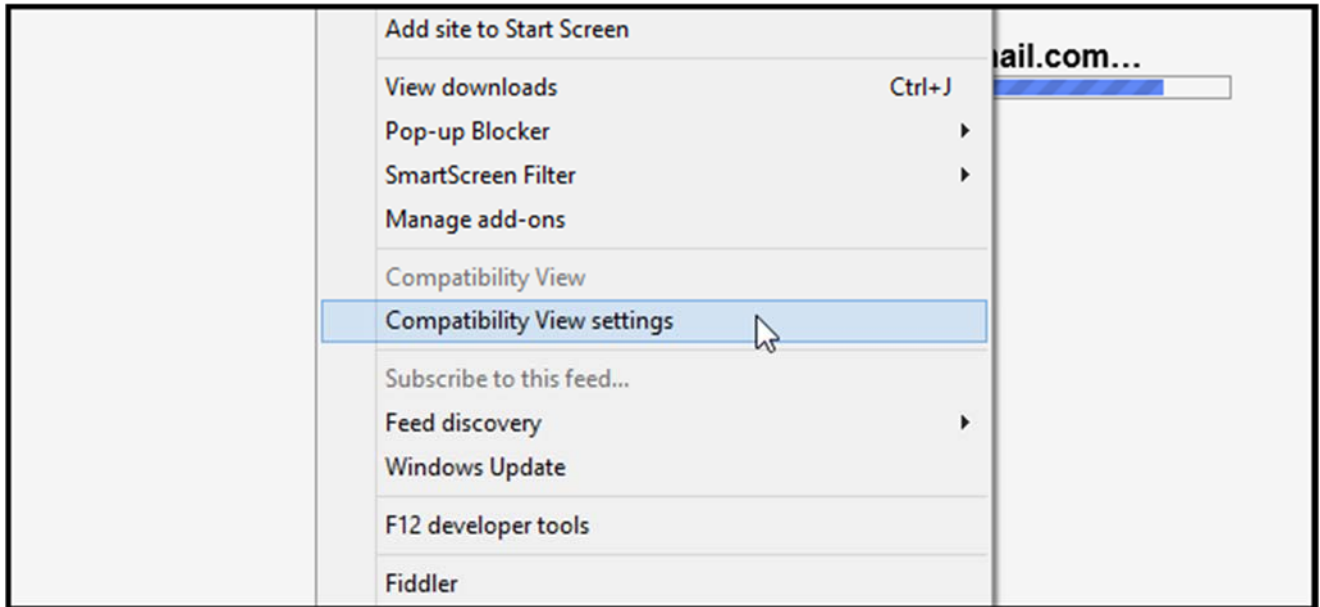


Getting Internet Explorer Out of Compatibility Mode

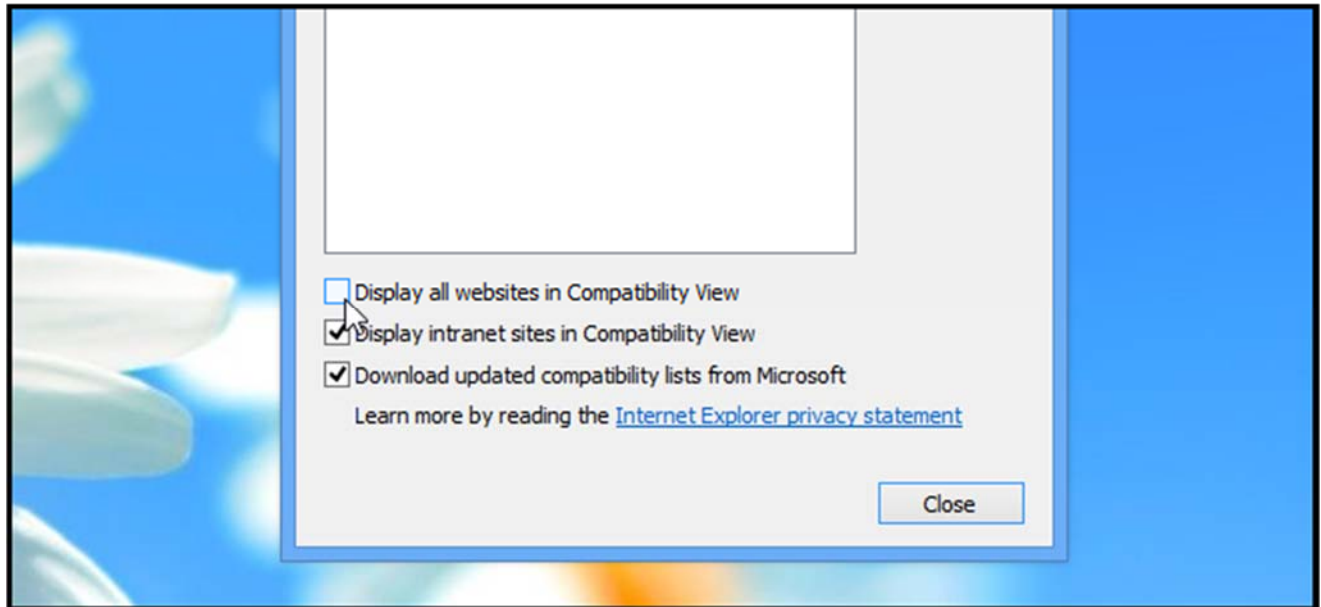
Open up Internet Explorer and press the *Alt* key on your keyboard. This will make a menu bar appear. Now go ahead and click on the *Tools* menu item.



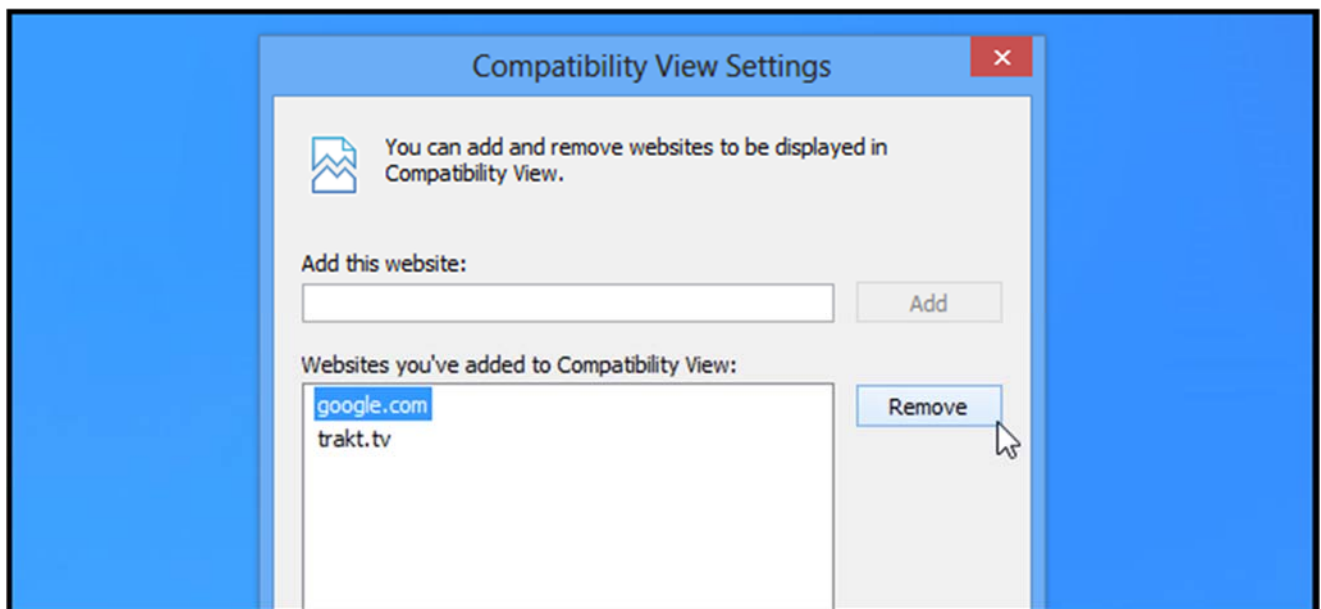
Then select the *Compatibility View settings* option.



The first and most common thing you will want to check is that the Compatibility Mode has not been enabled for all websites. You can do this by making sure the *Display all websites in Compatibility View* check box is unchecked.



Next you will want to select the sites that are giving you issues and remove them from the list. Please remember that the compatibility view is there for a reason so only remove the sites that look funny or aren't working correctly. They probably incorporate newer elements that weren't available in older browsers – causing the compatibility view to break them.



Then click on close and refresh the page. Now older sites that you left in the list will still use compatibility view, and newer ones will use this mode.